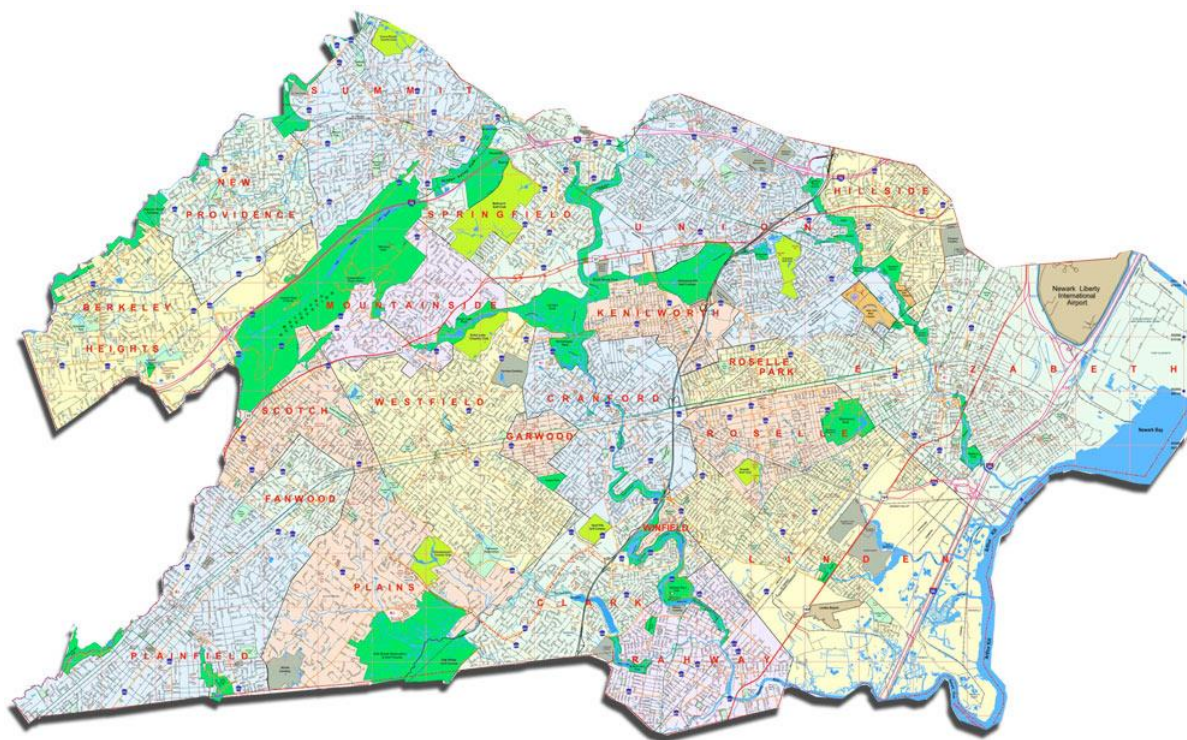


Union County, NJ PROFILE 2018

Prepared by UCEDC
For Union County Board of Chosen Freeholders,
Sergio Granados, Chair





UCEDC, a non-profit economic development corporation, is dedicated to stimulating economic growth for small businesses throughout Union County by providing them with resources and solutions for business expansion. Since 1977, UCEDC has helped entrepreneurs open their doors and assisted established businesses expand into new markets through innovative lending, comprehensive training initiatives and government procurement programs.

Financing

Access to capital is often a business owner's largest hurdle. We offer a variety of financing programs to meet your needs at every stage of your business's growth. As an SBA lender, we offer loans from \$500 to \$5 million through the microloan, Community Advantage 7(a) and 504 financing programs. Speak to our experienced staff to find the option that meets your needs.

Government Contracting

Federal, state and local government agencies spend billions of dollars each year buying goods and services from small businesses, just like yours. UCEDC can help you break into this lucrative market through free specialized training programs, one-on-one counseling services, and assistance in preparing bids and contract management.

Training

Whether you're looking for short presentations, day-long workshops, or intensive courses, UCEDC has the training and technical assistance you need to succeed. Our training professionals will help you master a wide variety of business and financial topics.

Business Tools

UCEDC produces a wide array of Union County business resource reports to provide you with the insights you need to make smart decisions. Market data, commercial real estate information, demographic analyses, and comprehensive contact lists for business advocacy organizations and agencies are just a few of the vital reports you'll find, free of charge.

Table of Contents

This report was compiled to provide a quick overview of the major demographic and economic factors impacting Union County today. Data sources are provided at the end of the report to allow for a more indepth exploration.



County Government	1
Population	2
Education.....	3
Labor Force/Employment.....	4
Commercial Property	5
Housing	6
Transportation.....	7
Community Life.....	9

COUNTY GOVERNMENT



Union County operates under a County Manager form of government provided under the Optional County Charter Law of 1975. The Board of Chosen Freeholders is comprised of nine members elected to three-year terms with three Freeholders running for election each year. The Board appoints the County Manager to administer the day-to-day operation of county government, which consists of six (6) major departments and Runnells Specialized Hospital in Berkeley Heights.

Union County Freeholders:

Sergio Granados, Chair
Bette Jane Kowalski, Vice Chair
Bruce H. Bergen
Angela R. Garretson
Angel G. Estrada
Christopher Hudak
Mohamed S. Jalloh
Alexander Mirabella
Rebecca Williams

For more information go to
<http://ucnj.org/departments/clerk-of-the-board/freeholders/>

Registered Voters:

Unaffiliated	125,703
Democrat	152,289
Republican	49,474
Libertarian	505
Green Party	322
Conservative Party	437
Reform Party	70
U.S. Constitution Party	547
Total	329,758

Source: Union County Board of Elections 2018

County Budget, 2018

\$483,663,953.98

Source: Union County Department of Finance

County Bond Rating

Aaa by Moody's Bond Records - March 2017

Source: Union County Division of the Treasurer

Union County Manager

Edward Oatman

For more information, please contact:
The Office of Public Information
Union County Administration Building
10 Elizabethtown Plaza
Elizabeth, NJ 07207
(908) 527-4000
www.unioncountynj.org

POPULATION

Union County has an estimated population of 563,892, reflecting an increase of 7.9% since 2000. It is among the most densely populated counties in New Jersey with a population density of 5,216 persons per square mile. Union County's population is racially, ethnically and culturally diverse. According to the 2016 Census, about 62.6% of Union County's residents were Hispanic/Latino, African-American, Asian or multi-racial.

Union County/ NJ State Comparisons

	2017		2000	
	Union County	New Jersey	Union County	New Jersey
Population	563,892	9,005,644	522,541	8,414,350
Median Household Income	\$70,476	\$73,702	\$55,339	\$65,266
Persons below poverty	10.4%	10.6%	4.2%	8.5%
Persons per square mile	5,216	1,196	5,059	1,189

Source: U.S. Census Bureau, 2000-2017

Population Characteristics, 2000 – 2016

AGE DISTRIBUTION	2000		2016	
Under 5	36,441	6.9	35,218	6.4
5-19	105,205	20.1	109,380	19.9
20-24	29,764	5.7	34,831	6.3
25-34	75,189	14.4	71,286	12.9
35-44	88,398	16.9	76,974	14.0
45-64	115,503	22.1	150,285	27.3
65-84	62,672	12	61,054	11.1
85 and Over	9,369	1.8	11,408	2.1
Total Population	522,541		550,436	

RACE	2000		2016	
White	342,302	65.5	315,833	57.4
Black	108,593	20.8	116,934	21.2
Hispanic (any race)	103,011	19.7	165,481	30.1
Asian	19,993	3.8	26,225	4.8
Multi Racial	16,960	6.4	9,225	1.7
Native American	1,215	3.2	3,428	0.6

GENDER	2000		2016	
Female	267,663	51.2	282,267	51.3
Male	254,387	48.7	268,169	48.7

Source: U.S. Census Bureau, 2000 - 2016

Municipal Populations, 2017

Municipality	2017	Municipality	2017	Municipality	2017
Berkeley Heights	13,759	Clark	16,109	Cranford	24,439
Elizabeth	130,215	Fanwood	7,808	Garwood	4,266
Hillside	22,274	Kenilworth	8,312	Linden	43,056
Mountainside	6,982	New Providence	13,308	Plainfield	51,327
Rahway	30,131	Roselle	21,976	Roselle Park	13,821
Scotch Plains	24,630	Springfield	17,726	Summit	22,323
Union	59,327	Westfield	30,433	Winfield	1,471

Source: US Census 2017

EDUCATION

Public Schools (2018)

Private Education (2018)

There are 27 public Schools Districts in Union County		There are 57 non-public schools in the county	
Elementary School (PreK-5)	102	Kindergarden	21
Middle/High School (6-12)	48	Elementary School (PreK-5)	21
Vocational Technical Schools	6	Middle/High School (6-12)	6
Charter Schools	4	Elementary/High School combined	9

Education Notes:

- The average cost of education per student (K-12) for the 2016/2017 school year: \$15,714
- Total public school enrollment (2017/2018): 94,166

Source: NJ Department of Education, 2018

Child Care Facilities in Union County

As of June 2018, there were 278 licensed child-care centers with an enrollment capacity of 25,184 children. Of these centers, there were 2 employer-sponsored child-care centers. In addition, there were 68 registered Family Child Care providers with an enrollment capacity of 335 children.

Source: Noemi. Martinez, Community Coordinated Childcare of Union County, personal communication, June 11, 2018

Institutions of Higher Education within Union County

School	Town	Total Enrollment	Web Address
Kean University of New Jersey	Union	14,842	www.kean.edu
Union County College	Cranford Elizabeth Plainfield Scotch Plains	9,711	www.ucc.edu

Source: Kean University & Union County College, 2017



Institutions of Higher Education within 15 miles of Union County

School	Town	Total Enrollment	Web Address
Bloomfield College	Bloomfield	1,947	www.bloomfield.edu
Caldwell University	Caldwell	2,206	www.caldwell.edu
Drew University	Madison	2,113	www.drew.edu
Essex County College	Newark	11,468	www.essex.edu
Fairleigh Dickinson University	Madison	12,217	www.fdu.edu
New Jersey Institute of Technology	Newark	11,400	www.njit.edu
Rutgers University-Newark	Newark	12,768	www.rutgers.edu
Rutgers University-New Brunswick	New Brunswick	49,577	www.rutgers.edu
Seton Hall University	South Orange	10,000	www.shu.edu

Source: State of New Jersey, Office of the Secretary of Higher Education

LABOR FORCE & EMPLOYMENT

Union County and New Jersey Unemployment Rates as of May 2018

	Civilian Labor Force	Unemployed Civilian Labor Force	Unemployment Rate
Union County	270,800	11,700	4.3%
New Jersey	4,436,900	180,900	4.1%

Employment by Industry, 2017

	Number	Percent
TOTAL	192,350	
Health Care	30,616	15.9
Retail Trade	28,371	14.7
Public Sector	31,566	16.4
Manufacturing	18,324	9.5
Administrative/Support	14,112	7.3
Professional/Technical	15,127	7.9
Wholesale Trade	13,900	7.2
Construction	10,318	5.4
Finance/Insurance	7,240	3.8
Other	22,776	11.8

Source: New Jersey Department of Labor & Workforce Development, Bureau of Labor Force Statistics, 2017

Largest Non-Government Businesses in Union County by Employment

Firm	Location	Nature of Business	Employees
Merck & Co.	Kenilworth & Rahway	Pharmaceuticals	4,000
Overlook Hospital	Summit	Hospital	3,700
Trinitas Hospital	Elizabeth	Hospital	2,300
Blue Apron	Linden	Meal Service	2,000
Linden North America, Inc.	New Providence	Manufacturer	2,700
Nokia	New Providence	Telecommunication	1,800
Phillips 66 Bayway	Linden	Refinery	1,000
Summit Medical Group	Various locations	Medical Practice	1,000

Source: UCEDC Major Employers List, 2017

Please Note: The number of employees shown above is approximate.

COMMERCIAL PROPERTY



Recently Completed Major Development Projects, 2017

Municipality	Project Name	\$ Value	Status
New Providence	Redwood-ERC	110 Million	Completed
Elizabeth	East Grand Associates Urban Renewal	20 Million	Completed
Linden	Hartz Mountain	15 Million	Completed
Rahway	Meridia Lafayette	15 Million	Completed
Linden	Blue Apron	12 Million	Completed

Source: UCEDC Major Development Projects Report, 2017

Major Industrial/Office Parks in Union County

Name	Address	City	Management Co.	Phone#
Liberty Hall Corporate Center	Morris and North Avenue	Union	Colliers International	973-299-3019
Connell Corporate I, II, III & IV	200 Connell Drive	Berkeley Heights	Connell Realty & Dev Co.	908-673-3736 Lee Martino
Cranford Business Parks	14-25 Commerce Drive	Cranford	Signature Acquisitions	732-509-2827 Wesley Moore
	65 Jackson Drive	Cranford	Signature Acquisitions	732-509-2827 Wesley Moore
Cranford Office & Industrial Park	Commerce Drive	Cranford	Signature Acquisitions	732-509-2827 Wesley Moore
Morris Plaza I & II	Morris Avenue	Union	M. Alfieri Co.	732-491-4200
Murray Hill Office Park	South Street and Central Avenue	New Providence	Kislak Commercial Real Estate Services	908-447-6022 Stephen Gianis

HOUSING

Housing Summary, 2017

2017	Union County	New Jersey
Housing units	201,107	3,586,442
Homeownership rate	58.8%	64.1%
Median value of owner-occupied housing units	\$345,500	\$315,900
Households	186,890	3,195,014
Persons per household	3.03	2.83

Source: US Census Bureau – Census 2017

Housing Prices and Real Estate Taxes, Union County, 2017

Municipality	Average Sale Price 2012	Average Sale Price 2017	5 Year Decrease/ Increase	Average Taxes 2012	Average Taxes 2016
Berkeley Heights	543,395	574,127	5.7%	\$11,093	\$12,300
Clark	383,104	435,006	13.5%	\$9,210	\$9,866
Cranford	421,858	460,171	9.0%	\$9,905	\$10,846
Elizabeth	223,100	268,659	20.4%	\$7,846	\$9,626
Fanwood	387,372	440,711	13.8%	\$10,437	\$11,722
Garwood	351,444	387,408	10.2%	\$8,750	\$9,612
Hillside	213,881	226,621	6.0%	\$8,671	\$9,171
Kenilworth	301,937	333,290	10.4%	\$7,338	\$8,601
Linden	239,258	274,238	14.6%	\$7,873	\$8,686
Mountainside	568,423	643,416	13.2%	\$10,189	\$12,038
New Providence	586,256	587,294	0.2%	\$12,314	\$13,612
Plainfield	221,009	266,011	20.4%	\$7,817	\$8,526
Rahway	230,054	260,880	13.4%	\$7,828	\$8,424
Roselle	165,304	198,420	20.0%	\$9,057	\$9,523
Roselle Park	245,784	261,099	6.2%	\$8,605	\$9,649
Scotch Plains	497,893	532,274	6.9%	\$11,513	\$12,795
Springfield	362,996	398,316	9.7%	\$10,010	\$10,852
Summit	905,335	1,036,126	14.4%	\$16,055	\$17,580
Union	261,838	299,859	14.5%	\$7,862	\$8,548
Westfield	670,355	736,097	9.8%	\$14,329	\$16,282
Winfield	N/A	N/A	N/A	\$3,110	\$3,476

Source: NJ Department of Treasury

TRANSPORTATION

Major Highways in Union County

Highway	Direction of Travel	Union County Exits
Garden State Parkway (Toll Road)	North & South	8
New Jersey Turnpike (Toll Road)	North & South	2
Interstate 78	East & West	8
Interstate 278	East & West	2
US Routes 1&9	North & South	Ample
US Route 22, 24	East & West	Ample

Source: Port Authority of New York and New Jersey

Travel Times and Distances

Destination	Distance (miles)	Drive Time (min.)
Midtown Manhattan, NY	16-30	30-60
Newark International Airport	0-18	5-35
Downtown Philadelphia, PA	72-84	100-120

Source: Port Authority of New York and New Jersey



Rail

Passenger Lines – There are 4 major lines which serve Union County: the Northeast Corridor Line, the Raritan Valley Line, the North Jersey Coast Line, and the Morris & Essex Line (which includes the Gladstone Line & Morristown Line).

Freight Lines – The Chemical Coast, Conrail, Lehigh Line of Conrail, Northeast Corridor, and the Raritan Valley Line.

ExpressRail – The ExpressRail On-Dock Cargo Transfer Facility at Port Elizabeth is a daily rail service that connects the Port and Union County to all Midwest and Canadian markets.

Source: Port Authority of New York and New Jersey

Air

Newark Liberty International Airport (EWR) – EWR is one of the most modern, efficient, fastest-growing airports in the world. Almost half of the airport is located within Union County boundaries. The number of passengers passing through Newark Airport in 2017 was more than 43 million (This includes domestic, international, commuter and regional passengers).

Source: Port Authority of New York and New Jersey

Linden Municipal Airport – Linden Airport provides a vital transportation link in the Union County infrastructure. The airport is a federal-designated reliever facility for Newark Liberty and operates a full-service facility. The airport is home to approximately 62 aircraft and close to 51,000 arrivals and departures each year.

Source: Airport IQ 5010

Air Traffic Comparison, 2017

	EWR	JFK	LGA
Passengers			
Domestic	30,513,283	26,920,199	27,394,990
International	12,880,216	32,425,222	2,107,229
Flights			
Domestic	335,726	254,255	337,188
International	92,963	179,108	26,859
Freight (In tons)			
Domestic	533,621	239,415	6,818
International	292,605	1,153,203	60

Source: Port Authority of New York and New Jersey

Trucking

- Over 50 independent freight/trucking companies are based in Union County.
- There are an additional 90 companies that serve Union County from within a 50-mile radius.
- There are over 55 private companies that have their own fleet of trucks within Union County.

Sea

Port Elizabeth is the largest containerized, deep-water shipping terminal on the East Coast.

Facts about Port Newark/Elizabeth:

- 2,230 acres/902.4 hectares of maritime property
- 41,000 linear feet/12,496.8 meter of berthing space
- Accommodates 3,700 vessels annually
- 3.3 million containers handled each year
- U.S. Foreign Trade Zone No. 49 is the largest foreign trade zone in the U.S. with 3,587 contiguous acres and over 6 million sq. ft. for storage and distribution.



Elizabeth Port, NJ

Port Activity: NY/NJ General Cargo Tonnage Volume

Year	Total	Imports	Exports
2016	36,868,918	26,385,614	10,483,304
2015	36,781,069	26,138,101	10,642,968

Source: Port Authority of New York and New Jersey

Port Activity: NY/NJ Containers/Twenty-Foot Equivalent Unit's

Year	Containers	TEU's
2016	3,602,508	6,251,953
2015	3,664,013	6,371,720

Source: Port Authority of New York and New Jersey

COMMUNITY LIFE

Hospitals Located in Union County

Hospital	Municipality	Number of beds
Overlook (Acute Care)	Summit	504
RWJ at Rahway (Acute)	Rahway	251
Trinitas (Acute Care)	Elizabeth	407
Summit Oaks Hospital (Psychiatric)	Summit	126

**Each municipality has a rescue squad and/or emergency medical service.*

Source: State of New Jersey Department of Health, Division of Health Facilities Evaluation and Licensing (2018)

Parks & Recreation

Union County is a rich and diverse region that boasts thirty-six parks, spanning 6,200 acres. These woodlands and open spaces comprise approximately 8.5 percent of the County's total land.

Major Parks, Recreation and Facilities in Union County

Park Name	Town(s)	Park Name	Town(s)
Black Brook Park	Kenilworth	Lenape Park	Cranford/Kenilworth/Springfield/Union/Westfield
Briant Park	Summit	Madison Ave Park	Rahway
Cedar Brook Park	Plainfield/S. Plainfield	Mattano Park	Elizabeth
Echo Lake Park	Mountainside/Westfield	McConnell Park	Cranford
Elizabeth River Parkway	Hillside/Union	Milton Lake Park	Clark/Rahway
Chatfield	Hillside/Union	Nomahegan Park	Cranford
Lightning Brook	Hillside/Union	Oak Ridge Park	Clark/Edison
Pruden/Pearl Oval	Elizabeth	Passaic River Parkway	Berkeley Heights/New Providence/Summit
Salem	Hillside/Union	Phil Rizzuto Park	Union/Elizabeth
Woodruff	Hillside/Union	Rahway River Parkway	Clark/Rahway
Green Brook Park	Plainfield/N. Plainfield	Sperry Park	Cranford
Hanson Park	Cranford	Unami Park	Cranford/Garwood/Westfield
Esposito Park	Clark	Ponderosa Park	Scotch Plains
Houdaille Quarry	Springfield	Warinaco Park	Elizabeth/Roselle
Kawameeh Park	Union	Wheeler Park	Linden

Other Recreation Areas in Union County

Golf Courses & Recreational Areas	Towns
Ashbrook Golf Course (18 Regulation Holes)	Scotch Plains
Galloping Hill Golf Course (27 Regulation Holes)	Kenilworth, Union
Watchung Reservation	Berkeley Hts., Mountainside Scotch Plains, Springfield, Summit
Hyatt Hills Golf Course (18 Holes)	Clark
Scotch Hills Country Club (9 Holes)	Scotch Plains
Summit Municipal Golf Course (9 Holes)	Summit



Galloping Hill Golf Course, Kenilworth, NJ

Resource List

- County of Union, New Jersey (2018)
Union County Freeholders:
<http://ucnj.org/departments/clerk-of-the-board/freeholders/>
- County of Union, New Jersey (2018). Union County Budget:
<http://ucnj.org/wp-content/uploads/2017/02/2017-Adopted-Union-County-Budget.pdf>
- County of Union, New Jersey (2018). County Registered Voters:
<http://ucnj.org/board-of-elections/affiliation-statistics/>
- Union County Population. U.S. Census Bureau (2017):
https://factfinder.census.gov/faces/nav/jsf/pages/community_facts.xhtml
- Union County/NJ State Comparisons. U.S. Census Bureau (2017):
<http://www.census.gov/quickfacts/table/PST045215/34039,00>
- Population Characteristics, 2000 -2016
U.S. Census Bureau, 2000 – 2016:
<http://www.census.gov/quickfacts/table/PST045214/00>
- Municipal Populations. U.S. Census Bureau (2017):
<http://www.census.gov/quickfacts/table/PST045214/00>
- Education. New Jersey Department of Education (2017-2018):
<http://www.state.nj.us/education/data/>
- Child Care Facilities in Union County. Noemi Martinez, Community Coordinated Childcare of Union County, personal communication, June 11, 2018.
- Average Cost of Education per student. NJ Department of Education (2017):
<http://www.state.nj.us/education/data/>
- Institutes of Higher Education (2018):
<http://www.kean.edu/about> and <https://www.ucc.edu/discover-union/>
- Institutes of Higher Education within 15 miles (2018):
http://www.nj.gov/highereducation/colleges/schools_county.shtml
- Union County and New Jersey Unemployment Rates (2018)
http://lwd.dol.state.nj.us/labor/lpa/employ/uirate/lfest_index.html
- Employment by Industry
http://nj.gov/labor/lpa/reports/datareports_index.html
- Largest Non-Government Business in Union County by Employment: UCEDC Major Employers List (2018)
- Top Recently Completed or Near Completion Major Development Projects, 2017: UCEDC Major Development Report (2018)
- Hospitals. State of New Jersey Department of Health (2018)
<http://www.state.nj.us/health/healthfacilities/>
- Division of Parks & Recreation (2018). Union County Parks:
<http://ucnj.org/parks-activities/>
- Transportation (2017). NY/NJ Port Activity:
<http://www.panynj.gov/airports/general-information.html>
- Air Traffic Comparison (2017). NY/NJ Port Authority:
<http://www.panynj.gov/airports/traffic-statistics.html>
- Port Activity (2016). NY/NJ Port Authority:
<http://www.panynj.gov/port/pdf/2005-2016-Historical-Trade-Stats-summary.pdf>
- Facts about Port Newark/Elizabeth (2017). NY/NJ Port Authority:
<http://www.panynj.gov/port/fitz-facts-features.html>
- Employment (2017). New Jersey Department of Labor (2017):
<http://lwd.state.nj.us/lpaapp/app>
- Housing (Average Residential Sale Prices)
NJ State Department of Treasury (2017):
<http://www.state.nj.us/treasury/taxation/lpt/statdata.shtml>
- Housing (Average Real Estate Taxes - NJ State Department of Treasury (2016):
<http://www.state.nj.us/treasury/taxation/lpt/statdata.shtml>
- Linden Airport data (2017):
<http://www.gcr1.com/5010web/airport.cfm?Site=LDJ&AptSecNum=2>
- Union County employment by industry (2017):
http://lwd.state.nj.us/labor/lpa/employ/emp_index.html
- Labor force and unemployment (2018):
http://lwd.dol.state.nj.us/labor/lpa/employ/uirate/lfest_index.html



75 Chestnut Street
Cranford, NJ 07016
T 908-527-1166 F 908-527-1207
www.ucedc.com